

# SHARP®

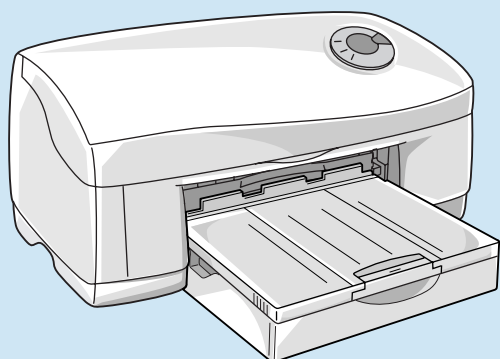
MODEL

# AJ-2200

**COLOUR INKJET PRINTER**

**SETUP GUIDE AND  
OPERATION MANUAL**

	Page
• <b>GETTING STARTED</b> .....	<b>3</b>
• <b>SETTING UP THE PRINTER</b> ....	<b>5</b>
• <b>LOADING PAPER</b> .....	<b>18</b>
• <b>SETTING UP FOR Windows</b> ....	<b>23</b>
• <b>SETTING UP FOR Macintosh</b> ...	<b>42</b>
• <b>APPENDIX</b> .....	<b>48</b>



## FOR CUSTOMERS IN U.K.

### IMPORTANT

The wires in this mains lead are coloured in accordance with the following code:

BLUE:	Neutral
BROWN:	Live

As the colours of the wires in the mains lead of this apparatus may not correspond with the coloured markings identifying the terminals in your plug, proceed as follows. The wire which is coloured **BLUE** must be connected to the terminal which is marked with the letter **N** or coloured black.

The wire which is coloured **BROWN** must be connected to the terminal which is marked with the letter **L** or coloured red.

The apparatus must be protected by a 3A fuse in the mains plug or distribution board.

**CAUTION: DO NOT CONNECT THE LIVE (BROWN) WIRE OR THE NEUTRAL (BLUE) WIRE TO THE EARTH TERMINAL OF YOUR 3-PIN MAINS PLUG.**

This equipment complies with the requirements of Directives 89/336/EEC and 73/23/EEC as amended by 93/68/EEC.

Dieses Gerät entspricht den Anforderungen der EG-Richtlinien 89/336/EWG und 73/23/EWG mit Änderung 93/68/EWG.

Ce matériel répond aux exigences contenues dans les directives 89/336/CEE et 73/23/CEE modifiées par la directive 93/68/CEE.

Dit apparaat voldoet aan de eisen van de richtlijnen 89/336/EEG en 73/23/EEG, gewijzigd door 93/68/EEG.

Dette udstyr overholder kravene i direktiv nr. 89/336/EEC og 73/23/EEC med tillæg nr. 93/68/EEC.

Quest' apparecchio è conforme ai requisiti delle direttive 89/336/EEC e 73/23/EEC, come emendata dalla direttiva 93/68/EEC.

Η εγκατάσταση αυτή ανταποκρίνεται στις απαιτήσεις των οδηγιών της Ευρωπαϊκής Ένωσης 89/336/EOK και 73/23/EOK, όπως οι κανονισμοί αυτοί συμπληρώθηκαν από την οδηγία 93/68/EOK.

Este equipamento obedece às exigências das directivas 89/336/CEE e 73/23/CEE, na sua versão corrigida pela directiva 93/68/CEE.

Este aparato satisface las exigencias de las Directivas 89/336/CEE y 73/23/CEE, modificadas por medio de la 93/68/CEE.

Denna utrustning uppfyller kraven enligt riktlinjerna 89/336/EEC och 73/23/EEC så som kompletteras av 93/68/EEC.

Dette produktet oppfyller betingelsene i direktivene 89/336/EEC og 73/23/EEC i endringen 93/68/EEC.

Tämä laite täyttää direktiivien 89/336/EEC ja 73/23/EEC vaatimukset, joita on muutettu direktiivillä 93/68/EEC.

The CE mark logo label is affixed to any equipment to which the above directives apply to. (This sentence is not applicable in any country where the above directives are not required.)

---

# Cautions

Follow the cautions below when using this unit.

- The unit is affected by the environment in which it is installed. Do not install your unit in the following area.
  - Dusty areas  
If dust enters the internal parts of the unit, damage or poor-quality output can result.
  - Areas in direct sunlight  
Direct sunlight can distort the plastic parts of the unit and result in poor-quality output.
  - Excessively hot, cold, humid, or dry areas (for example, near heaters, humidifiers, or air conditioners)  
This may result in damp paper, condensation within the internal mechanisms, misfeeds, and dirty output.
  
- Operating Conditions
  - Temperature : 10-35 degrees Celsius (50-95 degrees Fahrenheit)
  - Relative humidity : 20%-85%
  - Note : When the temperature reaches 30 degrees Celsius (86 degrees Fahrenheit), the relative humidity must be 60% or less.
  
- The power outlet should be installed near the equipment, and should be easily accessible.
- When moving the unit, be sure to first turn the power button off, and then remove the power cord from the outlet.
- Place the unit on a firm, level surface.
- Be sure to use only ink tanks of SHARP genuine supplies.
- If you get ink spots on your skin, wash them with water as soon as possible.
- Store the spare ink tanks out of the reach of children.

# CONTENTS

## GETTING STARTED

MAIN FEATURES .....	3
USER'S MANUAL .....	3

## SETTING UP THE PRINTER

SETUP PROCEDURE .....	5
CONFIRMING THE CONTENTS .....	6
PART NAMES AND FUNCTIONS .....	7
UNPACKING .....	9
ATTACHING THE TRAYS .....	10
CONNECTING THE INTERFACE CABLE .....	11
CONNECTING THE POWER CORD .....	12
INDICATOR LIGHTS .....	13
INSTALLING THE PRINT HEADS AND INK TANKS .....	14

## LOADING PAPER

LOADING PAPER INTO THE PAPER TRAY .....	18
LOADING THE BYPASS TRAY WITH PAPER .....	22

## SETTING UP FOR Windows

HARDWARE AND SOFTWARE REQUIREMENTS .....	23
BEFORE INSTALLATION .....	23
INSTALLING THE PRINTER DRIVER .....	24
ALIGNING THE PRINT HEAD .....	37
HOW TO USE THE ONLINE MANUAL .....	40
HOW TO PRINT .....	41
BONUS SOFTWARE .....	41

## SETTING UP FOR Macintosh

HARDWARE AND SOFTWARE REQUIREMENTS .....	42
INSTALLING THE PRINTER DRIVER .....	42
ALIGNING THE PRINT HEAD .....	45
HOW TO USE THE ONLINE MANUAL .....	46
HOW TO PRINT .....	47

## APPENDIX

SPECIFICATIONS OF THE PRINTER .....	48
SUPPLIES .....	49
PAPER TYPE .....	49
INTERFACE CABLE .....	49
INDEX .....	50
SOFTWARE LICENSE .....	51

## MAIN FEATURES

- High speed printing of 17ppm (A4/8.5"x11", monochrome) or 10ppm (A4/8.5"x11", colour).
- 2400 x 1200dpi printing with smoothing produces outstanding quality images.
- Carbon black ink enables print quality similar to a laser printer.
- Each ink tank is independent, they can be used until completely spent, ensuring minimum waste. The print head is also fully detachable, requiring no special tools for replacement.
- With an optional high-capacity ink tank (of black), you can print approximately 700 sheets.
- The printer is equipped with a 150 sheet capacity paper tray, allowing the user to print big jobs without constantly refilling the tray.
- USB interface<sup>\*1</sup> enables simple connections with Hotplug<sup>\*2</sup>. A parallel interface is also provided as standard.
- This printer can be used with Windows 95, Windows 98, Windows Me, Windows 2000, Windows NT 4.0 (Service Pack 3 or later), and Mac OS 8.5.1 - 9.x.

<sup>\*1</sup> USB is available with a PC/AT compatible computer that was originally equipped with USB and had Windows 98, Windows Me or Windows 2000 preinstalled. As for Macintosh, USB is available with Mac OS 8.5.1 - 9.x and a computer that was originally equipped with USB.

<sup>\*2</sup> Peripherals can be plugged or unplugged while the computer and they are connected to a power source.

## USER'S MANUAL

The contents of each manual for the printer is as follows.

### **Setup Guide and Operation Manual (this manual)**

Explains what steps and warnings need to be followed before printing.

#### **Getting Started**

Provides you with information on how to use this manual and the Online Manual, a list of cautions, an introduction to the printer, and other useful tips that will help you set up the printer.

#### **Setting up the Printer**

Lists the setup procedures including how to connect the printer to a computer and to a power source.

#### **Loading Paper**

Explains how to insert paper into the printer, and other requirements for printing.

#### **Setting up for Windows**

#### **Setting up for Macintosh**

Explains how to install the printer driver into a computer.

#### **Appendix**

Provides you with information on printer specifications and printer supplies.

## Online Manual

After preparing the printer as shown in this manual, check the Online Manual for information on preference requirements for printing and troubleshooting.

### **How to Use the Online Manual**

Explains how to use the Online Manual.

### **Windows 95/98/Me/NT 4.0 Printer Properties**

Explains how to configure items in the printer driver on Windows 95/98/Me/NT 4.0.

### **Windows 2000 Printer Properties**

Explains how to configure items in the printer driver on Windows 2000.

### **Print**

Provides information on how to print a document.

### **Print Status Window (Windows only)**

Explains the function of the print status window.

### **Sharing Printer (Windows only)**

Explains how to share the printer, and setup procedures for sharing the printer through a network.

### **Maintenance**

Provides information on how to align and change printer supplies. Instructions for cleaning the printer are also provided.

### **Troubleshooting**

Provides instructions for how to solve problems.

## Conventions used in this manual and Online Manual

In this manual, the following icons are used to provide the user with information pertinent to the use of the printer.



Warning

Warns the user that injury may result if the contents of the warning are not properly followed.



Caution

Cautions the user that damage to the machine or one of its components may result if the contents of the caution are not properly followed.



Note

Notes provide information relevant to the machine regarding specifications, functions, performance, operation and such, that may be useful to the user.

## Trademark acknowledgements

Microsoft and Windows are trademarks of Microsoft Corporation in the U.S.A. and other countries.

IBM and PC/AT are trademarks of International Business Machines Corporation.

Apple, Macintosh and ColorSync are trademarks of Apple Computer, Inc.

Adobe and Acrobat are trademarks of Adobe Systems Incorporated.

All other trademarks and copyrights are the property of their respective owners.

# SETTING UP THE PRINTER

Here we explain how to connect the printer to a computer, and a power source, after removing the printer from its packaging. Read this chapter carefully before use.

## SETUP PROCEDURE

When using the printer for the first time, setup the printer following the procedure shown below.

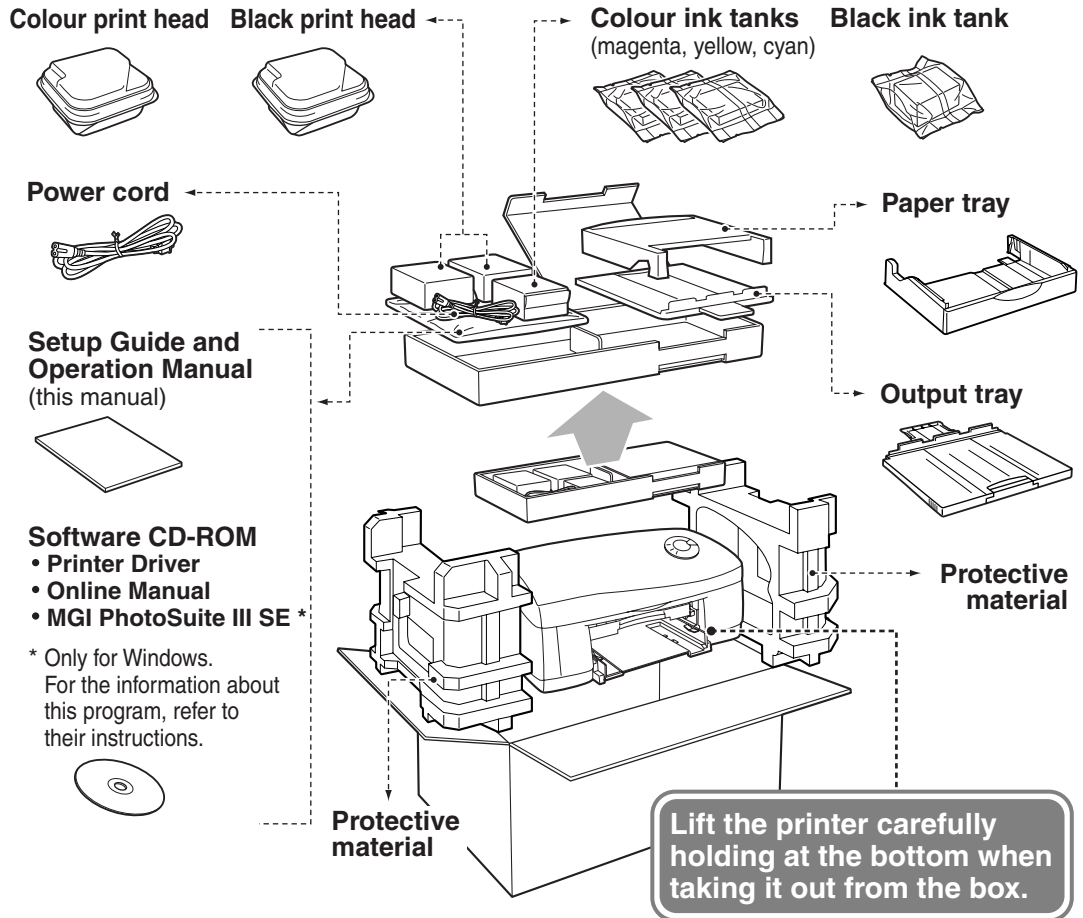
Setup workflow	Reference	
	Windows	Macintosh
Make sure that all the accessories are supplied with the printer.	Page 6	
Remove the protective materials.	Page 9	
Attach the paper tray and the output tray.	Page 10	
Connect the interface cable.	Page 11	
Connect the power cord.	Page 12	
Install the print heads and the ink tanks.	Page 14	
Load paper into the paper tray.	Page 18	
Install the printer driver.	Page 23	Page 42
Align the print head.	Page 37	Page 45
Now, you can print with the printer.	Page 41	Page 47
	Online Manual	

# CONFIRMING THE CONTENTS

The following items are packed with the printer in the box.

After opening the box, please check if the following are included with the printer.

If any of the following items are missing, please contact your point of purchase.



- Interface cables for connecting the printer to your computer are not included. Please purchase the appropriate cable for your computer (page 49).
- Do not unpack the print heads and the ink tanks until installing them in the printer.
- The box and protective materials will be needed for transportation. Do not throw them away.

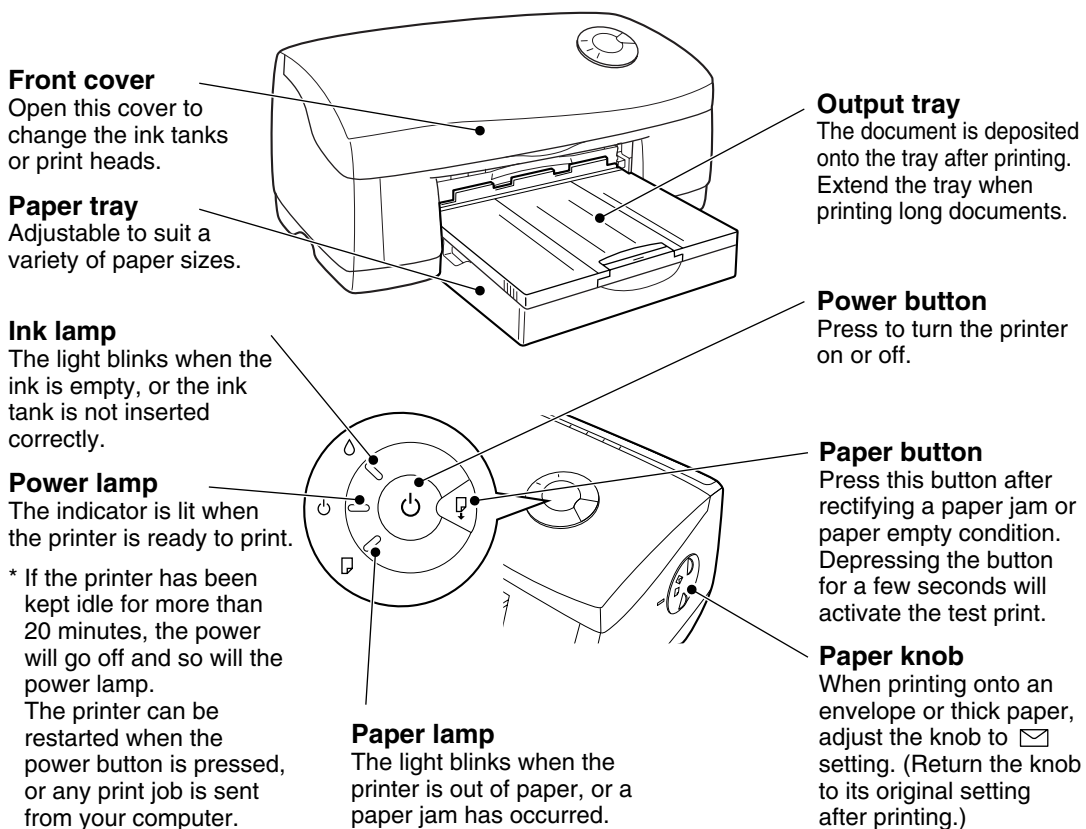


# PART NAMES AND FUNCTIONS

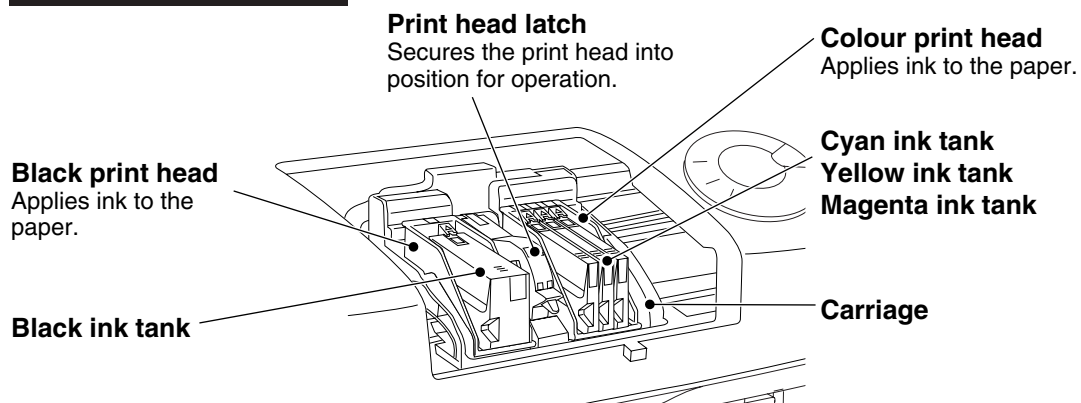
The following illustration lists the part names and function. Before operating, it is advisable to familiarise yourself with the printer.

The illustration below shows the printer with all the parts installed.

## Front Side



## Internal Part



## Rear Side

### USB interface connector (B type)

Use a USB cable to connect the printer to your computer. It is possible to insert the cable after the printer has been switched on.

### Bypass tray

Use this tray to print on a single page. When printing large banners, make sure to use this tray. Insert paper into the tray print side up. When printing onto thick paper, open the tray until it reaches position 2. (The tray has two stop positions.)

### Parallel interface connector (36pin)

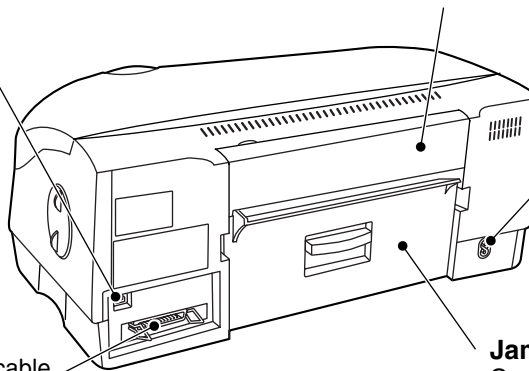
Use a parallel interface cable (IEEE1284) to connect the printer to your computer.

### Power socket

Plug the power cord \* into the socket.

### Jam cover

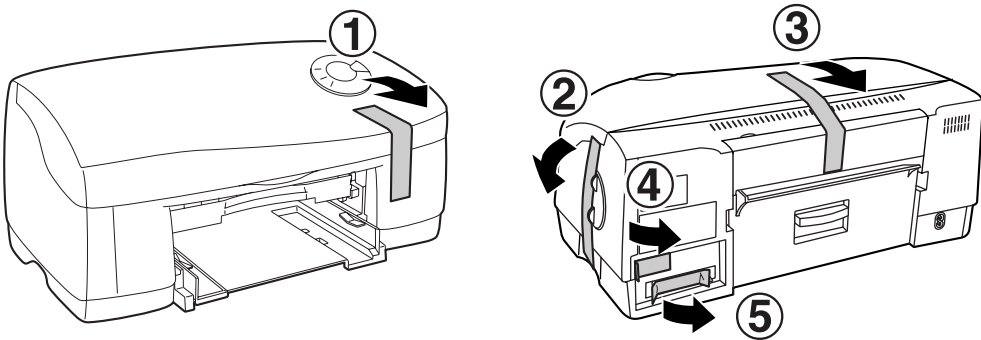
Open this cover to remove jammed paper.



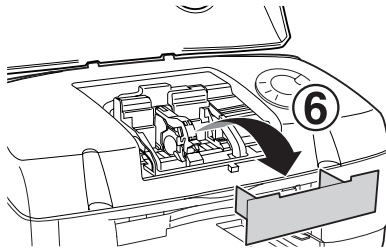
\* When the power cord is connected to the outlet, power for the printer is turned on automatically.

# UNPACKING

- 1 Remove the tape ① - ⑤ shown in the illustrations.



- 2 Open the front cover, and remove the protective material ⑥ shown in the illustration.

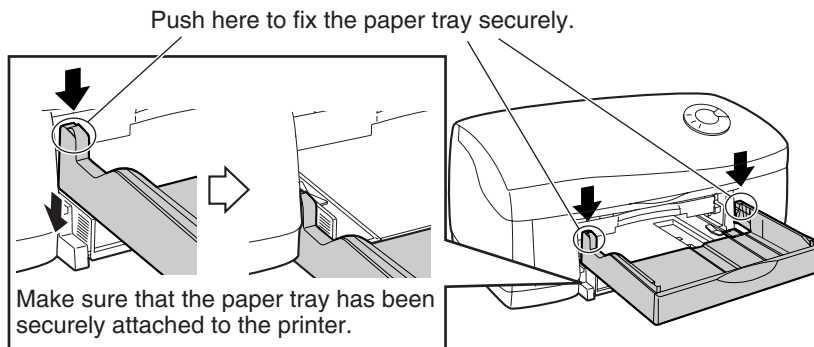


---

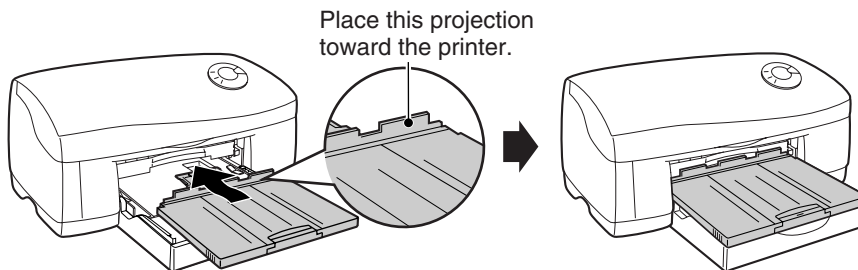
# ATTACHING THE TRAYS

Attach the paper tray and output tray to the front of the printer.  
Follow the steps shown below.

- 1 Attach the paper tray by firmly pushing down both edges.**



- 2 Attach the output tray as shown in the illustration.**



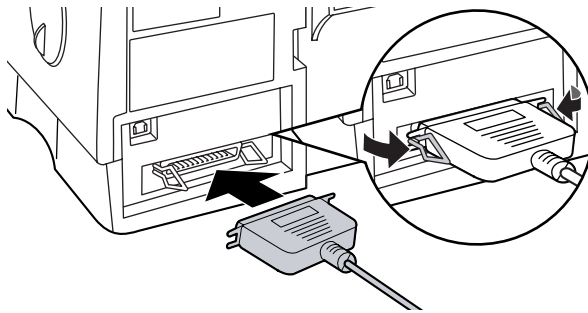
## CONNECTING THE INTERFACE CABLE

This printer includes both USB and parallel interface connectors.

Interface cables for connecting the printer to your computer are not included with this printer. You need to purchase the cable suitable for the connector on your computer, referring to "Interface Cable" (page 49).

### Connecting the Parallel Interface Cable

- 1** Obtain an IEEE1284 shielded parallel interface cable.
- 2** Ensure that your computer and printer are turned off.
- 3** Insert the cable into the parallel interface connector located on the rear of the printer, and fasten with clasps.



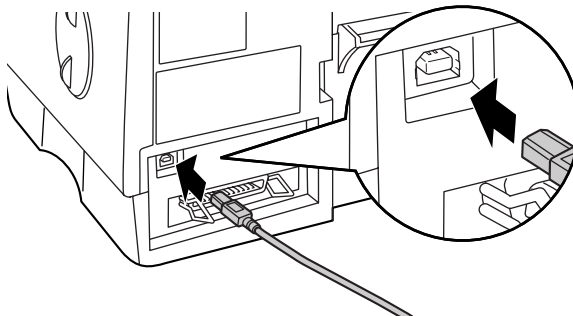
- 4** Insert the other end of the cable into the interface connector of your computer.

### Connecting the USB Interface Cable



USB is available with a PC/AT compatible computer that is originally equipped with USB and has Windows Me, Windows 98 or Windows 2000 preinstalled. As for Macintosh, USB is available with Mac OS 8.5.1 - 9.x and a computer that is originally equipped with USB.

- 1** Obtain a shielded USB interface cable.
- 2** Insert the cable into the USB interface connector located on the rear of the printer.

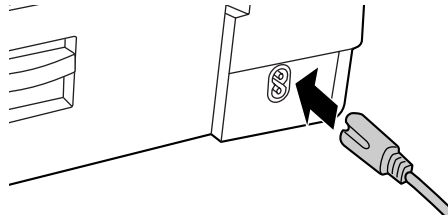


- 3** Insert the other end of the cable into the interface connector of your computer, or the USB hub connected to your computer.

---

# CONNECTING THE POWER CORD

- 1 Insert the power cord into the socket on the rear of the printer.



- 2 Connect the other end of the power cord to an outlet.

Power for the printer is turned on automatically.



Do not connect the printer to other than a local voltage outlet. Plugging the printer into an incompatible power supply may cause extensive damage.

After the printer turned on, go to "INSTALLING THE PRINTER HEADS AND INK TANKS" on page 14.

## HOW TO SHUT OFF POWER

- 1 Turn off the power by pressing the power button and ensure that the power lamp is extinguished.
- 2 Unplug the power cord from the outlet.



- Be sure that the plug in the outlet is readily accessible to all persons. Power is present in the product even if the power button is off in order to maintain good print quality.
- To completely shut off the power, first turn off the power using the power button. Then unplug the power cord, after first ensuring that the carriage has returned to its home position on the right side of the printer and the green power lamp has been extinguished. However, the printer should be turned on promptly, otherwise blocking of the print heads or drying out of the ink tanks may occur.
- When no print head is installed, the printer cannot be turned off by pressing the power button.

# INDICATOR LIGHTS

When only the green power lamp is lit, the printer is working properly.

When a printer error occurs, a light will indicate what problem has occurred, as explained below.



When turning on the unit for the first time after purchasing, the ink lamp blinks rapidly because print heads and ink tanks are not attached yet. The lamp will go out when the initial setup completes.

○.....lit    ◌.....blinking    ◌.....fast blinking    ○.....extinguished (lamp is off)

Light condition			Problem and Solution
Ink ◌	Power ◌	Paper ◌	
○	○	◌	<b>Paper tray is empty, or a paper jam has occurred.</b> Load more paper or remove the jammed paper and press the paper button.
◌	○	○	<b>No ink, or a print head is not installed.</b> Change the ink tank, or install a print head.
◌	◌	○	<b>Front cover is open.</b> Close the front cover.
○	◌	○	<b>The printer is warming up, or receiving data.</b> Please wait.
◌	◌	◌	<b>The carriage is not operating normally, or some errors may have occurred inside the printer.</b> If any paper is jammed, remove the jammed paper, and then press the "Paper" button. If no paper is jammed, press the "Paper" button to cancel the error warning. If the lights are still blinking even after trying to cancel the error, disconnect the power plug from the printer, and then insert it again. If your printer still does not work, please contact your authorised SHARP service centre.

For more details on solving a problem, refer to the "**Troubleshooting**" section of the Online Manual.

# INSTALLING THE PRINT HEADS AND INK TANKS

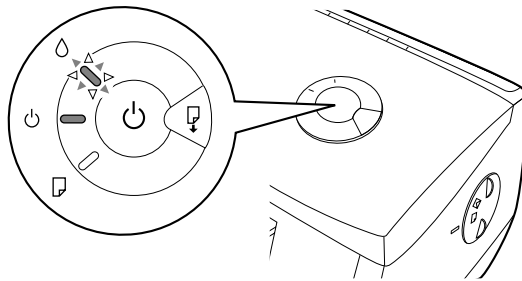
Follow the steps below for installation.



This section describes how to install the print heads and ink tanks when you install them for the first time after purchasing this printer. Refer to "Changing the Ink Tank" or "Changing the Print Head" in your online manual when you change ink tank or print head after installing.

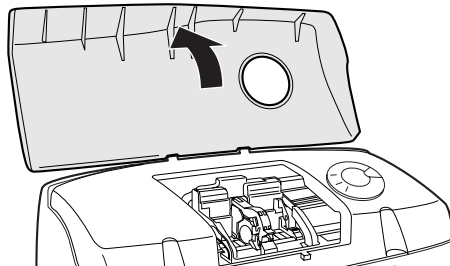
## Installing the Print Heads

- 1 Make sure that the power lamp is lit, and the ink lamp is blinking rapidly.**



If the power lamp is not lit, press the power button.

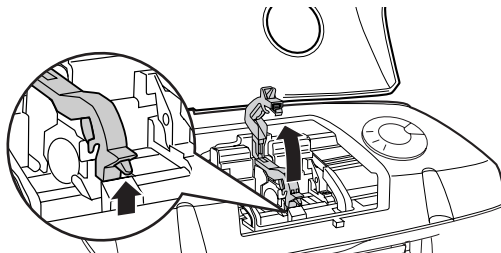
- 2 Open the front cover.**



Do not try to move the carriage manually by force.

- 3 Raise the print head latch.**

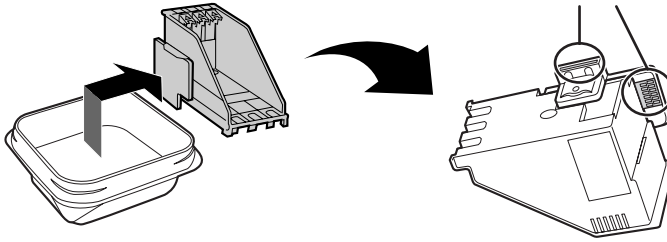
Raise the latch until it comes to a complete halt.





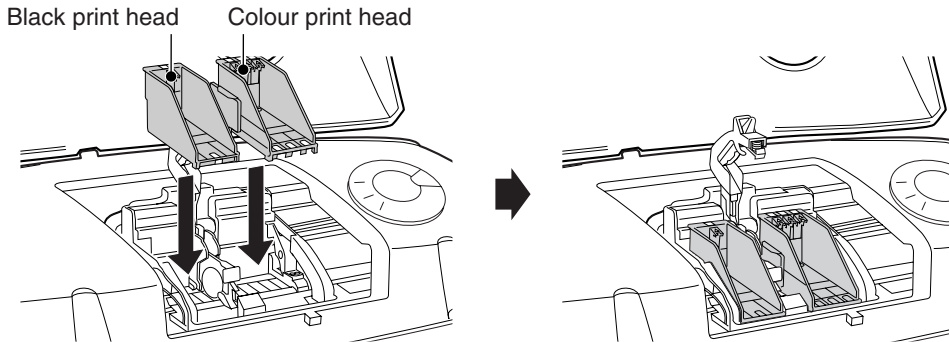
#### 4 Remove the print heads from their protective cases.

Do not touch the metal portion of the print head directly. Doing so may lead to improper printing.



#### 5 Insert the print heads.

Insert the black print head into the left carriage opening, and the colour print head into the right carriage opening.

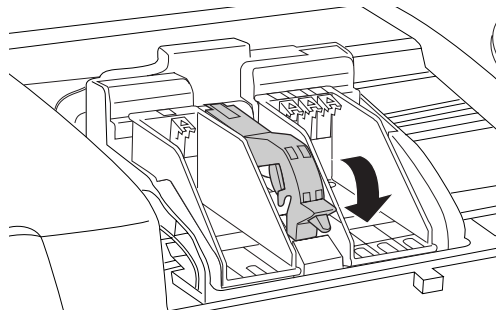


Caution

Be careful not to damage the print heads. If any of them is damaged, the printer may not work properly.

#### 6 Lower the print head latch.

Lower the latch until it clicks into the latched position.

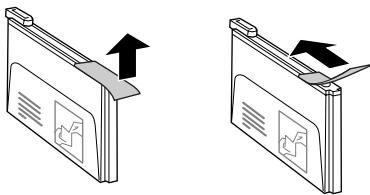


Caution

Make sure that the print head latch is fixed securely. Failing to do so may generate noise or cause errors.

## Inserting the ink tanks

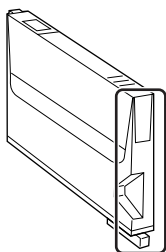
- 1 **Unpack the ink tanks from their protective wrapping and slowly remove the tape.**



Caution

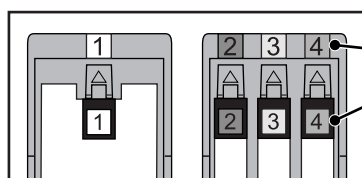
- Hold the ink tank upright when removing the tape. Do not touch the uncovered opening on the ink tank, as ink will get on your hands.
- Ensure that there are no pieces of tape remaining on the ink tank.

- 2 **Turn the ink tanks upside down.**



Do not touch this area.  
The printer may not print  
if it is dirty.

- 3 **Insert each of the ink tanks to the print head of the corresponding number.**

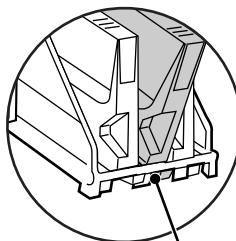


①

Match the ink tank number to the  
print head number.

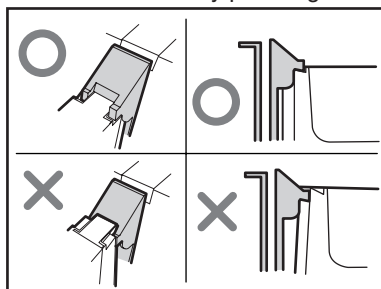
③

Make sure that each tab securely  
fixes the ink tank by pressing here.



②

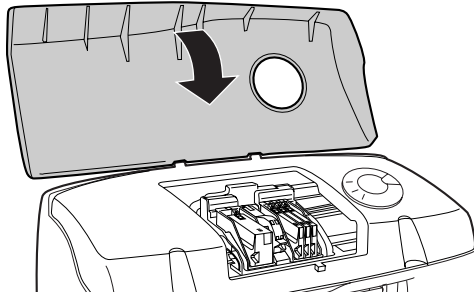
Hook the projection on the  
ink tank here to fix them.



Caution

Make sure that the numbers on the ink tanks correspond to the numbers on the print heads. If they do not correspond to each other, print problems will occur. In this case, replace the ink tanks to the correct positions, and then print a test page referring to "Test Print Head" in the Online Manual. Before sending any print job to the printer make sure that the test page is successfully printed.

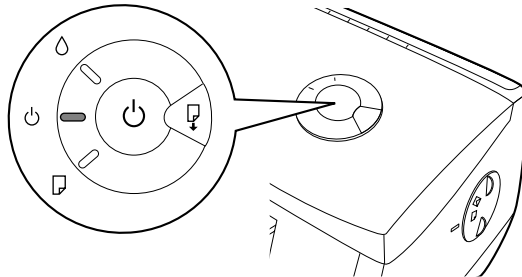
**4 Close the front cover.**



**The power lamp will blink and warming-up will start.**

After closing the cover the carriage will return to its home position, and the ink will be fed to the print head (this could take a while).

**5 Confirm the ink lamp is not blinking.**



If the ink lamp continues to blink, open the front cover, return to step 5 of "Installing the Print Head" and follow the procedures once more.



To keep good print head quality, keep all the ink tanks installed to the corresponding print head.



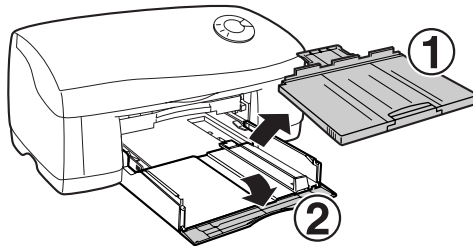
During ink tank replacement, if the cover is left open for more than 8 minutes, the carriage will automatically return to its home position. To move the carriage to the centre position again, close the front cover, and then open it again.

# LOADING PAPER

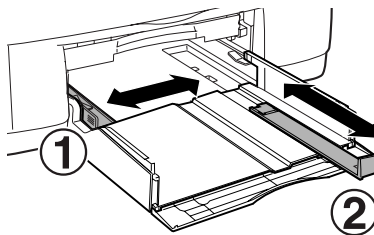
Follow the steps below to load paper into the paper tray or bypass tray. You can load plain paper and other special paper. For detailed information of paper type, see page 49.

## LOADING PAPER INTO THE PAPER TRAY

- 1 Remove the output tray ①, and open the front lid of paper tray ②.

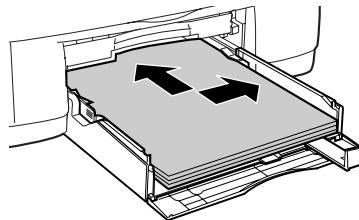


- 2 Adjust the guides ① and ② shown in the illustration to the width of the paper.

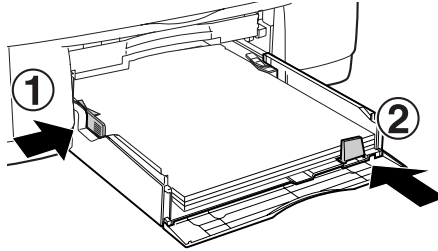


- 3 Load the paper.

Load the paper print side down into the paper tray. Make sure to push the paper to the right side and the rear side of the tray.

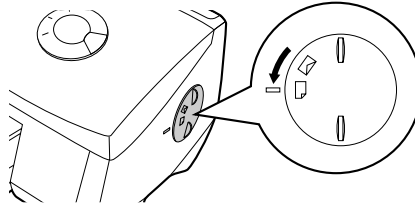


#### 4 Move the guides (①, ②) to touch the edges of the paper.

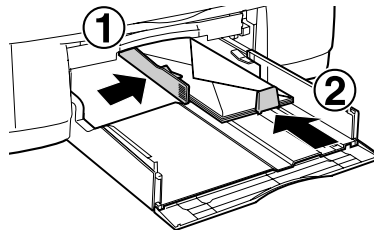


#### When loading envelopes

1) Set the paper knob to the "Thick Paper (✉)" setting.



2) Load the envelope face down with the flap to the right, and then adjust the paper guides to the width of the envelope.

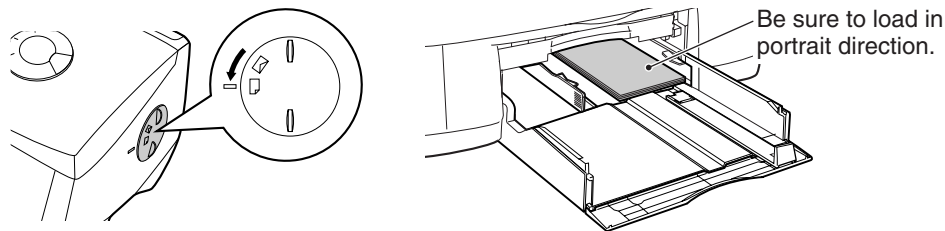


#### Notes for loading envelopes

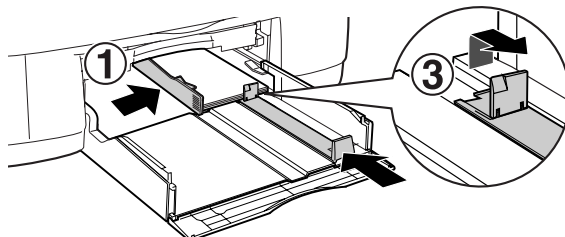
- Load envelopes in portrait direction into the paper tray.
- Do not use non-standard envelopes, envelopes with clasps, or window envelopes.
- Be sure to select each of Com10, DL, C6, and Invitation A2 on the paper size setting of the printer driver. (For detailed information on printer driver, refer to the online manual.)

**When loading index cards, postcards or birthday cards**

1) Set the paper knob to the "Thick Paper (✉)" setting, and then load the card print side down.



2) Set guide ③ up, and then fit guide ① and ③ against the loaded cards.



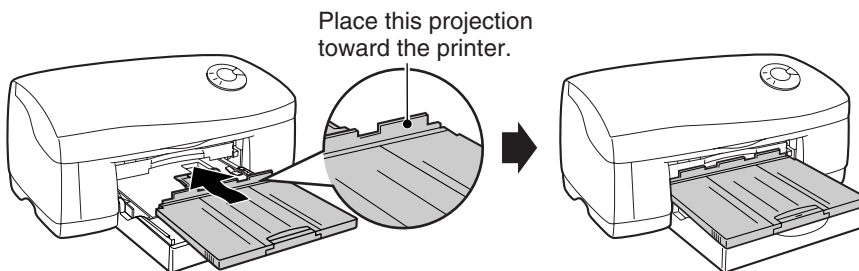
**Note**

- Most paper and envelopes will be fed correctly from the paper tray. However, if paper or envelopes are particularly stiff or heavy, they should be fed one at a time through the bypass tray. This will avoid wrinkling or misfeeding.
- It is recommended that you perform test printing on normal paper before printing on the card.

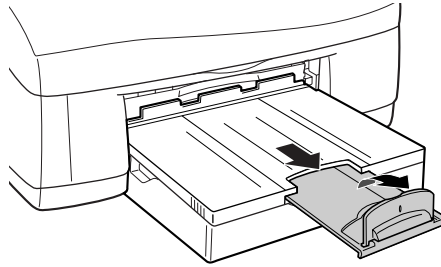
**5 Close the front lid of paper tray by firmly pushing on its right edge.**

**Note** With some sizes of paper, guide ② may stick out of the paper tray. In this case, print with the front lid of the paper tray open.

**6 Attach the output tray.**



- 7** Pull out the output tray extension to the proper position, and then raise the paper stop guide.

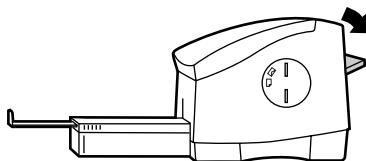


- Be sure that paper is free of rips, dust, wrinkles, and curled or bent edges.
- Make sure all the paper in the stack is the same size and type.
- Fan the paper and tap it against a flat surface to ensure it is even before loading into the printer.
- The paper tray can hold up to 150 sheets of 75g/m<sup>2</sup> (20lbs.) plain paper. Be sure to keep the total thickness of the loaded paper stack below 15mm.
- When loading postcard size paper into the paper tray, load it in portrait direction.
- When loading paper, ensure there is no space between the paper and the guide, and check if the guide is not set too narrow causing the paper to bend. Loading paper in these ways will result in document skew or a paper jam.
- The paper knob should always be set to the "Normal Paper (☐)" setting except while printing on thick paper or envelopes.
- When not using the printer for an extended period, remove all paper from the paper tray and store it in a dry place. If paper is left in the printer for an extended period, the paper will absorb moisture from the air, resulting in paper jams.
- When adding new paper to the paper tray, remove the old paper already contained in the tray, place it on top of the new paper. Then load it all into the paper tray. Placing new paper on top of the paper already contained in the tray may result in feeding two sheets at one time.

# LOADING THE BYPASS TRAY WITH PAPER

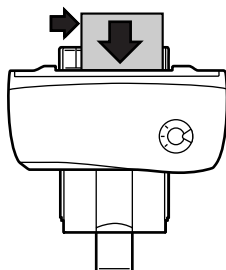
If you wish to print on banner paper or another paper type not loaded into the main paper tray, use the bypass feed. Only one sheet of paper (or up to 5 sheets of banner paper) can be placed in the bypass tray at a time.

- 1 **Open the bypass tray located on the rear of the printer.**



- 2 **Load the paper print side up.**

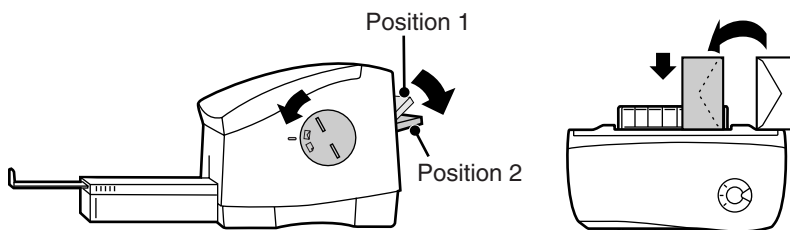
Align the paper with the right side of the bypass tray and press the paper button. The paper will be fed slightly into the printer.



## When loading an envelope

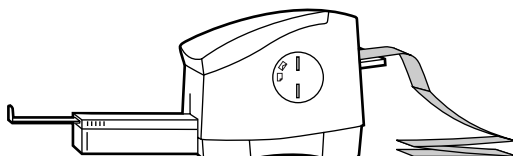
Open the bypass tray until it reaches position 2 (the tray has two stop positions), set the paper knob to the "Thick Paper (✉)" setting.

Load the envelope face up with the flap to the right, and position against the right edge of the tray as shown below. Refer to "Notes for loading envelopes" on page 19.



## When loading banner paper

Open the bypass tray until it reaches position 2, and set the paper along the right side edge of the tray.



- Maximum 5 sheets of banner paper can be used.
- When printing onto banner paper, ensure to use an application software supporting banner paper.
- The paper knob should always be set to the "Normal Paper (☐)" setting except while printing on thick paper or envelopes.



# SETTING UP FOR Windows

To use this printer with your computer, the printer driver should be installed onto your computer's hard drive. In this chapter, you will learn how to install them and how to use the Online Manual.

The following term is used in this chapter.

## CD-ROM

Means the supplied CD-ROM with the AJ-2200 software.

## HARDWARE AND SOFTWARE REQUIREMENTS

Check the following hardware and software requirements in order to install the AJ-2200 printer driver.

Computer type	IBM PC/AT or compatible computer equipped with a USB* <sup>1</sup> or bi-directional parallel interface (IEEE1284)
Operating system* <sup>2</sup>	Windows Me, Windows 98, Windows 95, Windows 2000, Windows NT 4.0 (Service Pack 3 or later)
Display	640 x 480dots (VGA) or better
Hard disk free space	10MB or more
Other requirement for hardware	An environment on which any of the operating systems listed above can fully operate

\*<sup>1</sup> Compatible with Windows Me, Windows 98 or Windows 2000 preinstalled model with USB interface equipped as standard.

\*<sup>2</sup> Printing is unavailable in MS-DOS mode.

## BEFORE INSTALLATION

The method to install the printer driver varies depending on your operating system and the cable connecting the printer and your computer. Check your interface and operating system, and then follow the steps shown below to install the printer driver.

Interface	Operating system	Reference pages for how to install
USB	Windows Me	"Installing onto Windows Me (USB interface)" (page 24)
	Windows 98	"Installing onto Windows 98 (USB interface)" (page 27)
	Windows 2000 *	"Installing onto Windows 2000" (page 31)
Parallel	Windows Me	"Installing onto Windows Me/98/95/NT4.0 (Parallel interface)" (page 34)
	Windows 98	
	Windows 95	
	Windows NT 4.0 *	
	Windows 2000 *	"Installing onto Windows 2000" (page 31)

\* The administrator's authorisation is required to install a printer driver.

# INSTALLING THE PRINTER DRIVER

## Installing onto Windows Me (USB interface)

- 1 Make sure that the printer is connected to your computer by USB cable.
- 2 Turn on the printer, and then turn on your computer.  
"Add New Hardware Wizard" window will appear.



If this window does not appear, ensure to connect the printer and your computer. If the window does not appear while the printer and your computer is securely connected by USB cable, refer to "'Add New Hardware Wizard' does not appear (USB interface)" in "Troubleshooting" of the online manual.

- 3 Insert the supplied CD-ROM into your CD-ROM drive.
- 4 Check the radio button for "Automatic search for a better driver (recommended)", and then click the "Next" button.



- 5 Click the "Finish" button.





"Add New Hardware Wizard" window will close. Now, you have completed to install the USB port driver. Before long, "Add New Hardware Wizard" window will appear again.

**6 Click the "Cancel" button.**



Make sure to click the "Cancel" button. If you continue installation without clicking the "Cancel" button, you may not install the driver successfully.

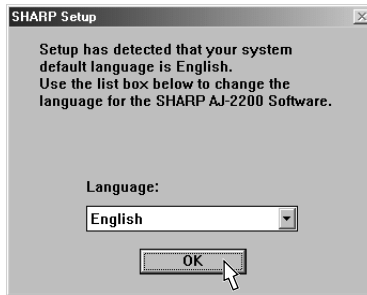


**7 Double-click "My Computer" (  ), and then double-click the CD-ROM (  ) icon.**

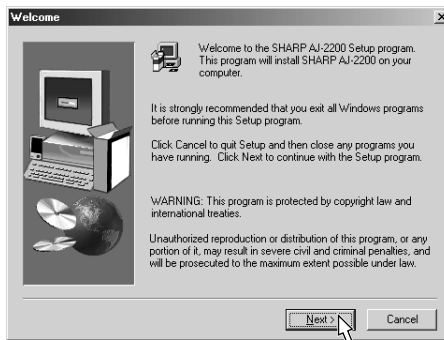
**8 Double-click the "Setup" (  ) icon.**

**9 Check if the appropriate language has been selected, and then click the "OK" button.**

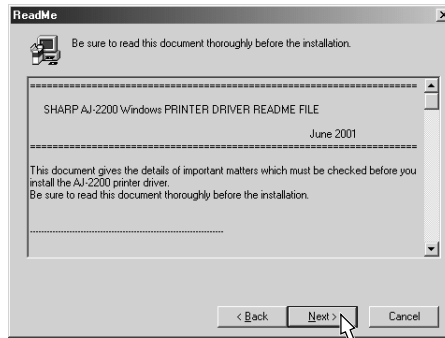
Normally, the correct language is selected automatically.



**10 After confirming the message in the "Welcome" window, click the "Next" button.**

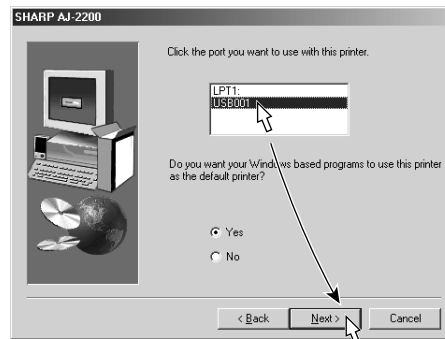


- 11** Be sure to read the descriptions in the "ReadMe" window, and then click the "Next" button.



- 12** Select the USB port (typically "USB001"), and click the "Next" button.

If the program displays "Do you want your Windows based programs to use this printer as the default printer?", check "Yes".



- 13** If a message appears, that confirms you really want to continue your installation, click the "Yes" button.

The setup program will start to copy the files.

- 14** If a message appears that informs you of the completion of the installation, click the "OK" button.

You have completed the installation of the printer driver.

**If a message appears that prompts you to restart your computer, click the "Yes" button.**

You have completed the installation of the printer driver.



Caution

If a message appears that prompts you to restart your computer, make sure to click the "Yes" button to restart your computer. The installation of the printer driver completes when your computer has been restarted.



Note

Before printing align the print head by the procedure on page 37.

## Installing onto Windows 98 (USB interface)

- 1 Make sure that the printer is connected to your computer by USB cable.
- 2 Turn on the printer, and then turn on your computer.  
"Add New Hardware Wizard" window will appear.



If this window does not appear, ensure to connect the printer and your computer. If the window does not appear while the printer and your computer is securely connected by USB cable, refer to "'Add New Hardware Wizard' does not appear (USB interface)" in "Troubleshooting" of the online manual.

- 3 Click the "Next" button.

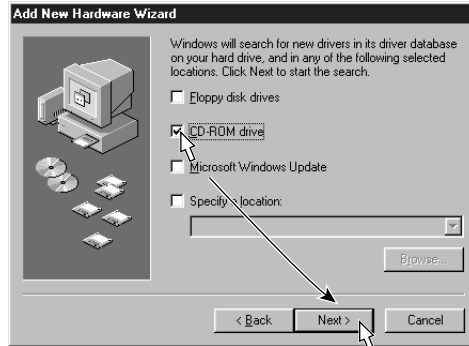


- 4 Check the radio button for "Search for the best driver for your device (recommended)", and then click the "Next" button.



- 5 Insert the supplied CD-ROM into your CD-ROM drive.

**6** Select the "CD-ROM drive", and then click the "Next" button.



**7** If a message appears, that lets you know that Windows is ready to install the driver, click the "Next" button.

The driver file will be installed onto your computer.

**8** Click the "Finish" button.






"Add New Hardware Wizard" window will close. Now, you have completed to install the USB port driver. Before long, "Add New Hardware Wizard" window will appear again.

**9** Click the "Cancel" button.

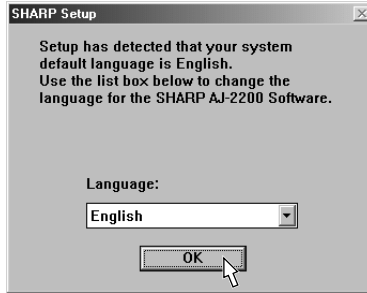


Make sure to click the "Cancel" button. If you continue installation without clicking the "Cancel" button, you may not install the driver successfully.

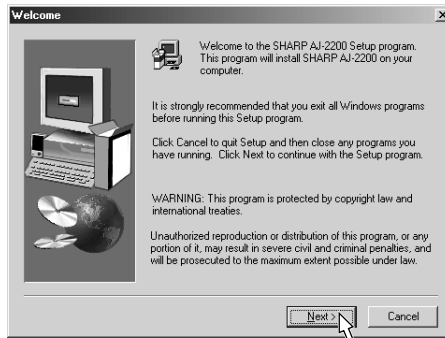


- 10 Double-click "My Computer" (  ), and then double-click the CD-ROM (  ) icon.
- 11 Double-click the "Setup" (  ) icon.
- 12 Check if the appropriate language has been selected, and then click the "OK" button.

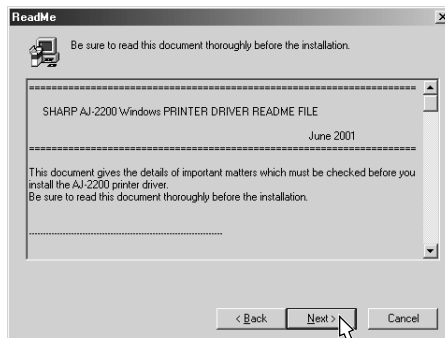
Normally, the correct language is selected automatically.



- 13 After confirming the message in the "Welcome" window, click the "Next" button.



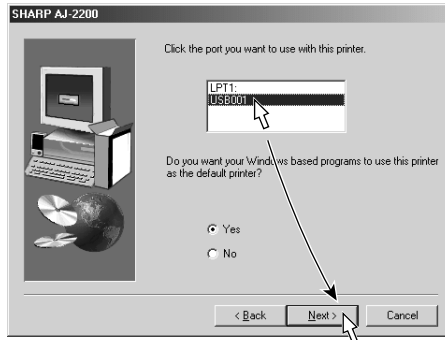
- 14 Be sure to read the descriptions in the "ReadMe" window, and then click the "Next" button.



SETTING UP FOR Windows

**15 Select the USB port (typically "USB001"), and click the "Next" button.**

If the program displays "Do you want your Windows based programs to use this printer as the default printer?", check "Yes".



**16 If a message appears, that confirms you really want to continue your installation, click the "Yes" button.**

The setup program will start to copy the files.

**17 If a message appears that informs you of the completion of the installation, click the "OK" button.**

You have completed the installation of the printer driver.

**If a message appears that prompts you to restart your computer, click the "Yes" button.**

You have completed the installation of the printer driver.



Caution

If a message appears that prompts you to restart your computer, make sure to click the "Yes" button to restart your computer. The installation of the printer driver completes when your computer has been restarted.



Note

Before printing align the print head by the procedure on page 37.



## Installing onto Windows 2000

- 1 Make sure that the printer is connected to your computer.**
- 2 Turn on the printer, and then turn on your computer.**

On this step, "Found New Hardware Wizard" window will appear.






If this window does not appear, ensure to connect the printer and your computer. If the window does not appear while the printer and your computer is securely connected by USB cable, refer to "Failed to Install the Printer Driver (Windows 2000)" in "Troubleshooting" of the online manual.



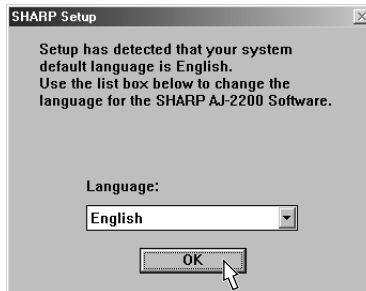
- 3 Click the "Cancel" button.**



Make sure to click the "Cancel" button. If you continue installation without clicking the "Cancel" button, you may not install the driver successfully.

- 4 Insert the supplied CD-ROM into your CD-ROM drive.**
- 5 Double-click "My Computer" (  ), and then double-click the CD-ROM (  ) icon.**
- 6 Double-click the "SETUP" (  ) icon.**
- 7 Check if the appropriate language has been selected, and then click the "OK" button.**

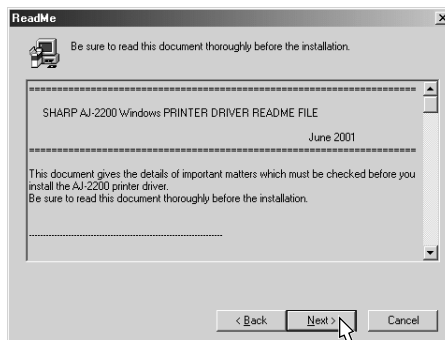
Normally, the correct language is selected automatically.



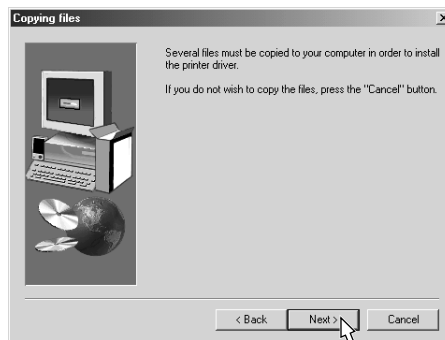
- 8 After confirming the message in the "Welcome" window, click the "Next" button.



- 9 Be sure to read the descriptions in the "ReadMe" window, and then click the "Next" button.



- 10 When the "Copying files" window appears, click the "Next" button.



The setup program will start to copy the files.

**11** When the "Preparations for installing the printer driver" window appears, click the "Next" button.



If "Digital Signature Not Found" window appears, be sure to click the "Yes" button. This window will not affect your operation.

**12** If a message appears that informs you of the completion of the installation, click the "OK" button.

You have completed the installation of the printer driver.

**If a message appears that prompts you to restart your computer, click the "Yes" button.**

You have completed the installation of the printer driver.



If a message appears that prompts you to restart your computer, make sure to click the "Yes" button to restart your computer. The installation of the printer driver completes when your computer has been restarted.



If "Printer Not Found" window appears, refer to "Failed to Install the Printer Driver (Windows 2000)" in "Troubleshooting" of the online manual.



Before printing align the print head by the procedure on page 37.

## Installing onto Windows Me/98/95/NT4.0 (Parallel interface)






The screen images in this section are those of Windows Me.

- 1** Make sure that the printer is connected to your computer.
- 2** Turn on the printer, and then turn on your computer.
- 3** If "Add New Hardware Wizard", "Update Device Driver Wizard", "New Hardware Found" or "Found New Hardware Wizard" window appear, click the "Cancel" button.

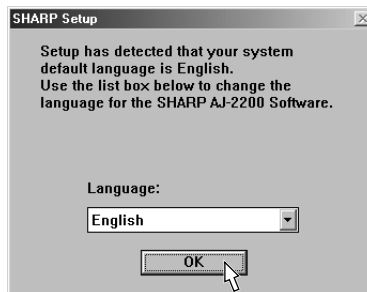
On Windows NT 4.0, the screen will not appear. Go on to the next step.



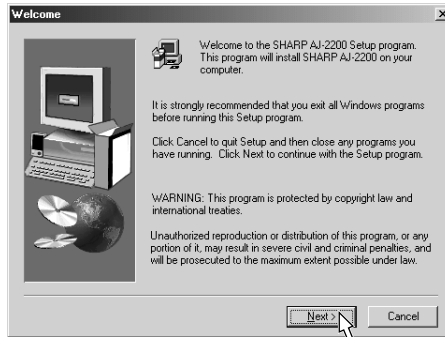
Make sure to click the "Cancel" button. If you continue installation without clicking the "Cancel" button, you may not install the driver successfully.

- 4** Insert the supplied CD-ROM into your CD-ROM drive.
- 5** Double-click "My Computer" (  ), and then double-click the CD-ROM (  ) icon.
- 6** Double-click the "Setup" (  ) icon.
- 7** Check if the appropriate language has been selected, and then click the "OK" button.

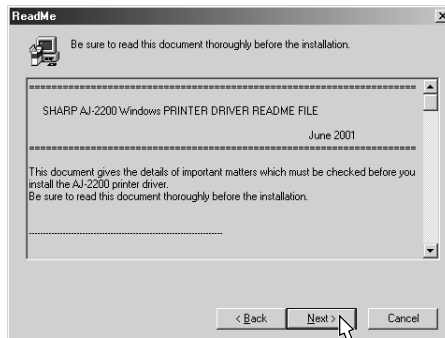
Normally, the correct language is selected automatically.



- 8** After confirming the message in the "Welcome" window, click the "Next" button.

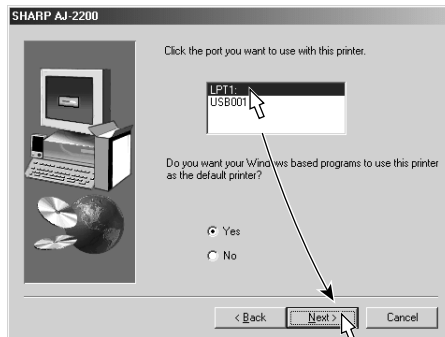


- 9** Be sure to read the descriptions in the "ReadMe" window, and then click the "Next" button.



- 10** Select the LPT port (typically "LPT1:"), and click the "Next" button.

If the program displays "Do you want your Windows based programs to use this printer as the default printer?", check "Yes".



- 11** If a message appears, that confirms you really want to continue your installation, click the "Yes" button.

The setup program will start to copy the files.

- 12** If a message appears that informs you of the completion of the installation, click the "OK" button.

You have completed the installation of the printer driver.

**If a message appears that prompts you to restart your computer, click the "Yes" button.**

You have completed the installation of the printer driver.



Caution

If a message appears that prompts you to restart your computer, make sure to click the "Yes" button to restart your computer. The installation of the printer driver completes when your computer has been restarted.



Note

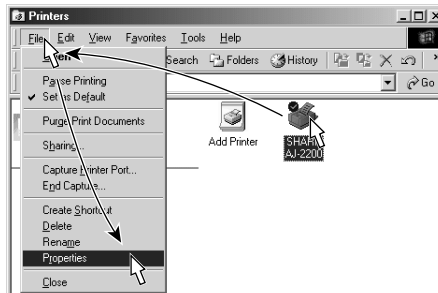
Before printing align the print head by the procedure on next page.

# ALIGNING THE PRINT HEAD

Before printing for the first time or after replacing the print head, make sure to align the print head position.

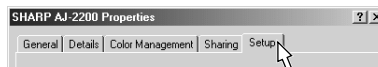
Follow the steps below to align the print head.

- 1** Make sure that A4 sized paper is set in the tray.
- 2** Click the "Start" button, select "Settings" and then click "Printers".
- 3** Click the "SHARP AJ-2200" icon and from the "File" menu select "Properties".

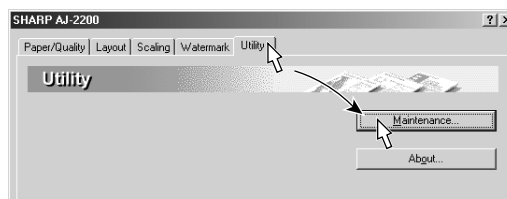


The printer driver setup screen will appear when "Printing Preferences" of Windows 2000 or "Document Defaults" of Windows NT 4.0 is selected. On those operating systems, go to the step 5.

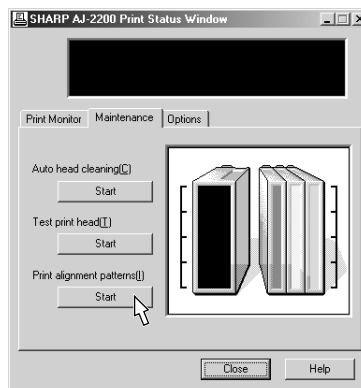
- 4** Click the "Setup" tab.



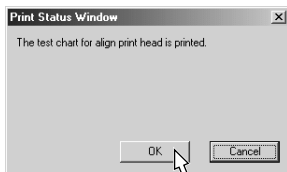
- 5** Click the "Utility" tab and then click the "Maintenance" button.



- 6** Click the "Start" button of "Print alignment patterns".

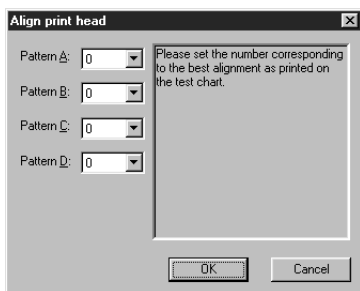


**7** Click the "OK" button.



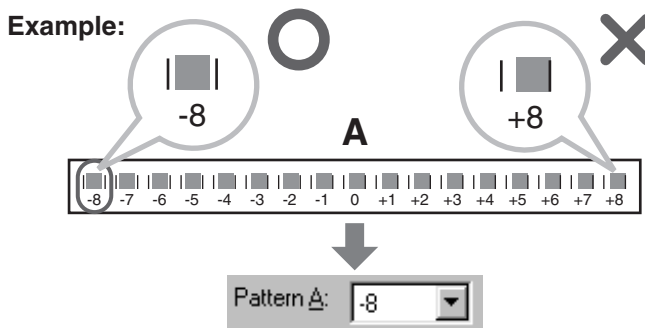
The "Align print head" dialog box will appear, and a test chart will be printed.

**8** Check the test chart results, and change the preferences to the best setting for each pattern.



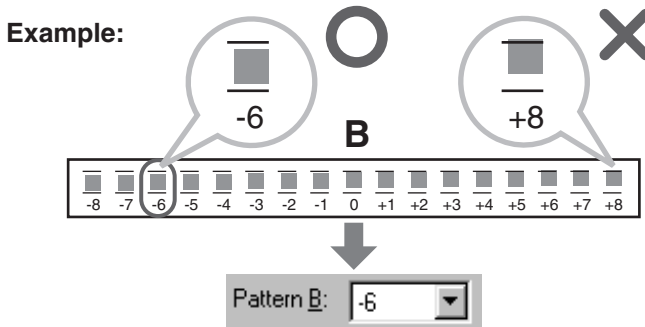
**1) Select a pattern sample for "Pattern A".**

Look at the chart A on your test chart. Select the number under the pattern sample, which ■ is located closest to the centre of the two vertical lines.



**2) Select a pattern sample for "Pattern B".**

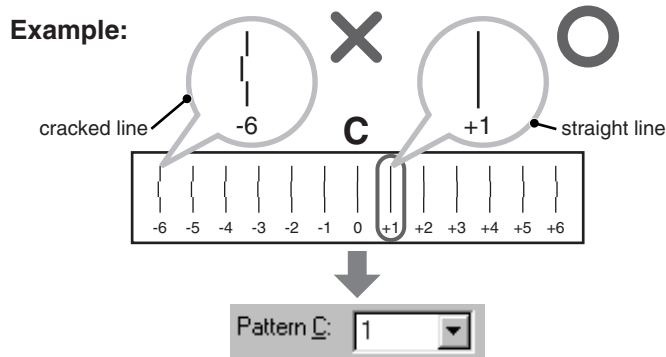
Look at the chart B on your test chart. Select the number under the pattern sample, which ■ is located closest to the centre of the two horizontal lines.



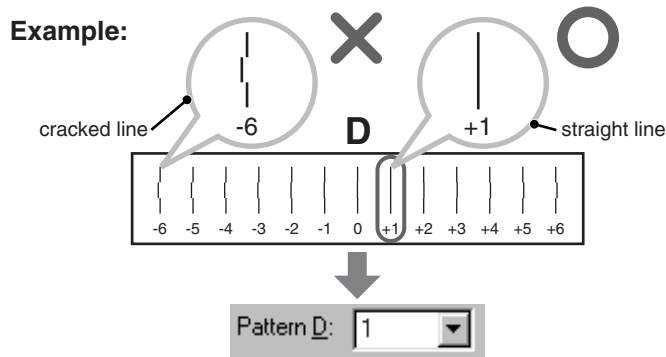


**3) Select a pattern sample for "Pattern C".**

Look at the chart C on your test chart. Select the number under the pattern sample, which has the straightest line.

**4) Select a pattern sample for "Pattern D".**

Look at the chart D on your test chart. Select the number under the pattern sample, which has the straightest line.

**9 Click the "OK" button in the "Align print head" dialog box.**

The print head will align itself.





- If you cannot find any satisfactory pattern sample for each of "Pattern A" to "Pattern D" settings, select the best ones among the printed pattern samples, and then go back to step 6. (For Macintosh, go back to step 4 on page 45.)
- The printer cannot perform other operations while aligning the print head.

# HOW TO USE THE ONLINE MANUAL

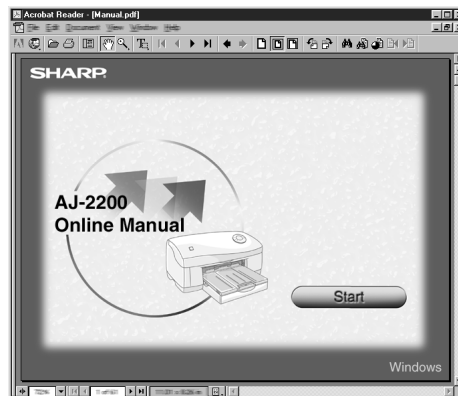
The Online Manual provides detailed instructions for operating the printer and a list of methods for dealing with printing problems.

To access the Online Manual, your computer must have Acrobat Reader 4.0 or a later version. If it is not installed, refer to "Installing Acrobat Reader" (next page).


- 1 Turn on your computer.**
- 2 Insert the supplied CD-ROM into your CD-ROM drive.**
- 3 Double-click "My Computer" (  ), and then double-click the CD-ROM (  ) icon.**
- 4 Double-click the "MANUAL" folder, double-click the "ENGLISH" folder, and then double-click the "MANUAL.PDF" icon.**



The following window will appear.



- 5 Click the  to read the Online Manual.**

To close the Online Manual, click the  button located at the top-right of the window.





- The Online Manual can be printed out using Acrobat Reader. SHARP recommends printing out the sections which you refer to regularly.
- Refer to "Help" of Acrobat Reader for more details on the operation and function of Acrobat Reader.

---

## Installing Acrobat Reader

To install Acrobat Reader, about 10MB of hard disk space is required.

- 1 Turn on your computer.**
- 2 Insert the CD-ROM into the CD-ROM drive.**
- 3 Double-click "My Computer" (  ), and then double-click the CD-ROM (  ) icon.**
- 4 Double-click the "ACROBAT" folder, and then double-click the "AR405ENG.EXE" icon.**

Follow the on-screen instructions to install Acrobat Reader.

---

## HOW TO PRINT

- 1 Make sure that the paper of the desired size and type is loaded in the tray.**
- 2 Open the document you intend to print, and select "Print" from the application's "File" menu.**
- 3 Verify the "Printer Name" is set to "SHARP AJ-2200" and click the "Properties" button.**

On Windows 2000, the "Properties" button does not appear. Set your preferences by switching the tab in the "Print" dialog box.

- 4 Specify the print settings including the number of copies, media type, and print quality, and then click the "OK" button to start printing.**



On Windows 2000, click the "Print" button to start printing.

For more information on print settings, refer to the online manual.

---

## BONUS SOFTWARE

To install MGI PhotoSuite III SE on the supplied CD-ROM, please refer to the following procedures. After turning on your computer, insert the CD-ROM.

- 1 Double-click "My Computer" (  ), and then double-click the CD-ROM (  ) icon.**
- 2 Double-click the "MGI" folder, double-click the "PS3" folder, and then double-click the "SETUP" icon.**

Follow the on-screen instructions to install PhotoSuite III SE.

---

# SETTING UP FOR Macintosh

To use this printer with your computer, the printer driver should be installed onto your computer's hard drive. In this chapter, you will learn how to install them and how to use the Online Manual.

The following term is used in this chapter.

## **CD-ROM**

Means the supplied CD-ROM with the AJ-2200 software.

Be sure to read the Readme file before installing the printer driver.

To open the Readme file, double-click the each location in the following order:

CD-ROM - Readme folder - English folder - Readme.

---

## HARDWARE AND SOFTWARE REQUIREMENTS

Check the following hardware and software requirements in order to install the AJ-2200 printer driver.

Computer type	Models equipped with USB interface as standard
Operating system	Mac OS 8.5.1 - 9.x
Display	640 x 480dots (VGA) or better
Hard disk free space	10MB or more
Other requirement for hardware	An environment on which any of the operating systems listed above can fully operate

---

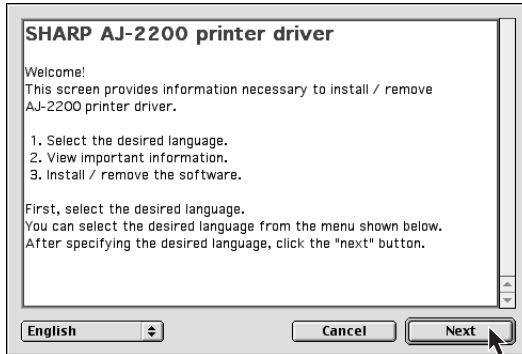
## INSTALLING THE PRINTER DRIVER

The AJ-2200 printer driver is provided on a CD-ROM.

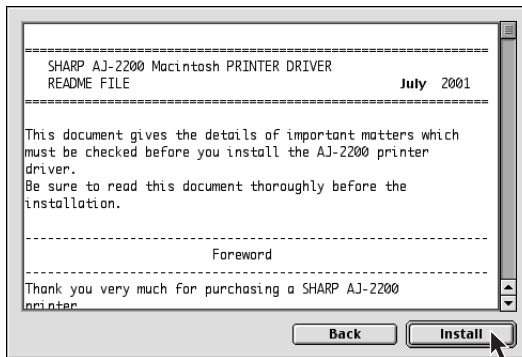
- 1 Make sure that the printer is connected to your computer by USB cable.**
- 2 Turn on the printer, and then turn on your computer.**
- 3 Insert the supplied CD-ROM into your CD-ROM drive.**
- 4 Double-click the CD-ROM (Ⓜ) icon on the desktop.**
- 5 Double-click the "Installer" (📦) icon.**

**6 Check if the appropriate language has been selected, and then click the "Next" button.**

Normally, the correct language is selected automatically.



**7 Read the message on the dialog, and then click the "Install" button.**



**8 Make sure that "Install" is selected from the pull-down menu on the upper right, and then click the "Install" button.**



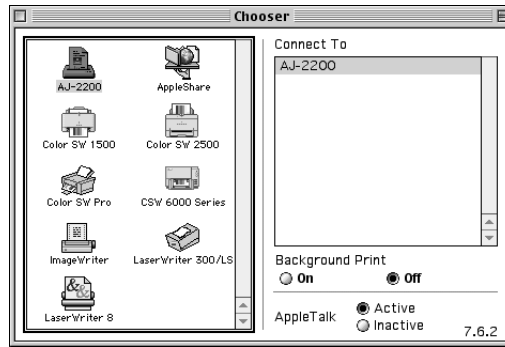
**9 If a message appears that informs you of the completion of the installation, click the "OK" button.**

You have completed the installation of the printer driver.

## Selecting the printer

- 1 Select "Chooser" from the Apple Menu () located at the top-left of the desktop.

The following window will appear.



- 2 Click "AJ-2200" icon and make sure that "AJ-2200" appears in the right-hand side box.

The printer is ready for printing.

For the information on the installed printer driver, see the online manual.



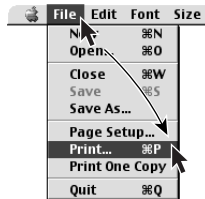
Before printing align the print head by the procedure on next page.

# ALIGNING THE PRINT HEAD

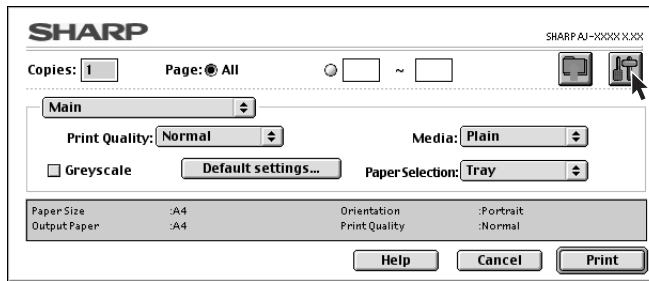
Before printing for the first time or after replacing the print head, make sure to align the print head position.

Follow the steps below to align the print head.

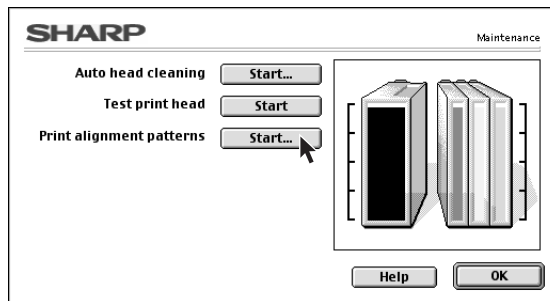
- 1 Make sure that A4 sized paper is set in the tray.
- 2 Select "Print" from the "File" menu of your application.



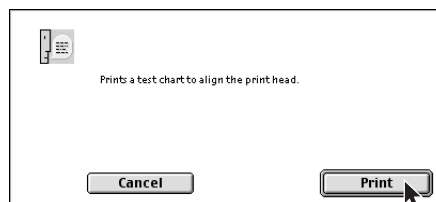
- 3 Click the "Maintenance" button (🔧).



- 4 Click the "Start" button of "Print alignment patterns".

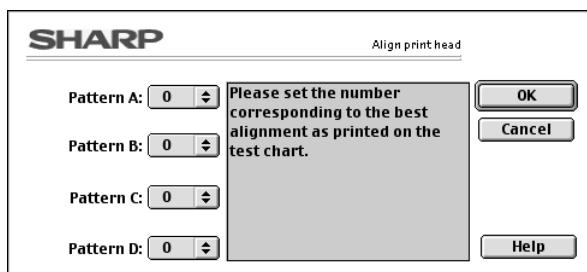


- 5 Click the "Print" button.



The "Align print head" dialog box will appear, and a test chart will be printed.

- 6** Check the test chart results, and change the preferences to the best setting for each pattern.



For the following procedure, refer to the step 8-1 on page 38.

## HOW TO USE THE ONLINE MANUAL

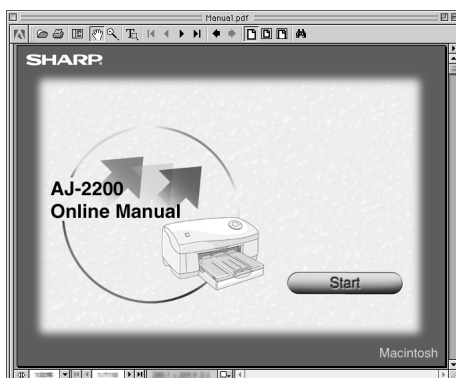
The Online Manual provides detailed instructions for operating the printer and a list of methods for dealing with printing problems.

To access the Online Manual, your computer must have Acrobat Reader 4.0 or a later version. If it is not installed, refer to "Installing Acrobat Reader" (next page).

- 1** Turn on your computer.
- 2** Insert the supplied CD-ROM into your CD-ROM drive.
- 3** Double-click the CD-ROM ( ) icon on the desktop.
- 4** Double-click the "Manual" folder, double-click the "English" folder and then double-click the "Manual (pdf)" icon.




The following window will appear.





## 5 Click the to read the Online Manual.


To close the Online Manual, click the  button located at the top-left of the window.



- The Online Manual can be printed out using Acrobat Reader. SHARP recommends printing out the sections which you refer to regularly.
- Refer to "Help" of Acrobat Reader for more details on the operation and function of Acrobat Reader.

## Installing Acrobat Reader

To install Acrobat Reader, about 10MB of hard disk space is required.

- 1 Turn on your computer.
- 2 Insert the supplied CD-ROM into your CD-ROM drive.
- 3 Double-click the CD-ROM () icon on the desktop.
- 4 Double-click the "Acrobat" folder and double-click the "Reader Installer" icon.

Follow the on-screen instructions to install Acrobat Reader.

## HOW TO PRINT

- 1 Make sure that the paper of the desired size and type is loaded in the tray.
- 2 Open the document you intend to print, and select "Print" from the application's "File" menu.
- 3 Specify the print settings. Click the "Print" button to start printing.  
For more information on print settings, refer to the online manual.

# APPENDIX

This chapter shows specifications of the printer, supplies, and how to store the supplies.

## SPECIFICATIONS OF THE PRINTER

Name		AJ-2200
Type		On demand, thermal inkjet type
Resolution		Max. 2400dpi x 1200dpi
Printing speed* <sup>1</sup>	Monochrome	17.0ppm
	Colour	10.0ppm
Paper	Width	Max. 215.9mm (8.5") Min. 76.2mm (3")
	Length * <sup>2</sup>	Max. 355.6mm (14") Min. 127mm (5")
Void area	Min.	Top 3mm, Bottom 3mm, Left 3mm, Right 3mm
	Recommendation	Top 19mm, Bottom 19mm, Left 10mm, Right 10mm
Print description language		Host based printing system
Interface		IEEE1284-compliant bi-directional parallel interface USB interface (B type)
Paper tray capacity	Paper tray* <sup>3</sup>	Max. 150 sheets of plain paper* <sup>5</sup>
	Output tray* <sup>4</sup>	Max. 50 sheets of plain paper* <sup>5</sup>
	Bypass tray	1 sheet
Ink life* <sup>6</sup>	Black	400 sheets (700 sheets with the optional AJ-T20B)
	Colour	350 sheets
External dimensions (W x D x H)		476mm x 374mm x 191mm (18.7" x 14.7" x 7.5")
Weight		6.15kg (13.5lbs.)
Power supply* <sup>7</sup>		Local voltage (±10%)
Power consumption	Idle	9.5W
	Printing	Max. 30.0W
Operation condition	Temperature	10°C - 35°C (50°F - 95°F)
	Relative humidity	20% - 85%
Storage condition	Temperature	-25°C - 40°C (-13°F - 104°F)
	Relative humidity	20% - 85%
Noise level		Sound Power Level LWA (1B=10dB) Printing: 5.5[B], Print mode: Normal, Standby: Background noise level Sound Pressure Level LPA (bystander positions) Printing: 45[dB(A)], Print mode: Normal, Standby: Background noise level Noise emission measurement in accordance with ISO 7779.
Emission Concentration (measurement according to RAL-UZ62)		Dust: less than 0.075mg/m <sup>3</sup>

\*<sup>1</sup>When printing SHARP original data with draft mode.

\*<sup>2</sup>For the Bypass Tray, the maximum paper size is 5-sheeted A4/8.5"x11" banner.

\*<sup>3</sup>Holds up to total thickness of 15mm paper stack.

\*<sup>4</sup>Holds up to total thickness of 5mm paper stack.

\*<sup>5</sup>With 75g/m<sup>2</sup> (20lbs.) plain paper.

\*<sup>6</sup>When using 20.3cm x 25.4cm (8"x 10") size paper at 5% image area in normal usage.

\*<sup>7</sup>For this printer's power supply requirement, see the name plate located on the back of the printer.



As a part of our policy of continuous improvement, SHARP reserves the right to make design and specification changes for product improvement without prior notice. The performance specification figures indicated are nominal values of production units. There may be some deviations from these values in individual units.

# SUPPLIES

Supply	Life *	Part Number
Ink tank (Black-Regular)	400 sheets	AJ-T20BR
Ink tank (Black-High Capacity)	700 sheets	AJ-T20B
Ink tank (Cyan)	350 sheets	AJ-T20C
Ink tank (Magenta)	350 sheets	AJ-T20M
Ink tank (Yellow)	350 sheets	AJ-T20Y
Print head (Black type)	10,000 sheets	AJ-H20B
Print head (Colour type)	10,000 sheets	AJ-H20C

\* When using 20.3cm x 25.4cm (8"x 10") size paper at 5% image area in normal usage.



- When storing spare ink tanks and print heads, leave them unopened in their packaging until you are ready to use them.
- For best results, use ink tanks within 6 months of installation.

# PAPER TYPE

Paper type	Weight	Note
Plain paper	60g/m <sup>2</sup> - 200g/m <sup>2</sup> (16lbs. - 110lbs. index)	
Coated paper		Use whiter side for printing.
Photo paper		Use glossy side for printing.
Transparency *		Use rougher side for printing.
T-shirt transfer		
Label		
Banner	75g/m <sup>2</sup> (20lbs.) Max. size : A4 x 5, 8.5"x11" x 5	Insert through bypass tray.
Envelope	75g/m <sup>2</sup> - 90g/m <sup>2</sup> (20lbs. - 24lbs.)	
Card	110g/m <sup>2</sup> - 200g/m <sup>2</sup> (110lbs. index) Max. thickness : 0.25mm	

\* Be sure to use SHARP recommended OHP films.



Ensure to use papers that satisfy the requirements above. Using papers that do not satisfy the requirements may result in paper jam or poor print quality.

# INTERFACE CABLE

Please purchase the appropriate cable for your computer.

## Parallel interface cable

IEEE1284 Shielded type bi-directional parallel interface cable (2m (6feet) Max.)

## USB interface cable

Shielded twisted pair cable (2m (6feet) Max.: high-speed transmission equivalent)

# INDEX

## A

- Acrobat Reader ..... 41, 47
- Aligning the print head ..... 37, 45
- Appendix ..... 48
- Attaching the trays ..... 10

## B

- Banner paper ..... 22, 49
- Black ink tank ..... 16, 49
- Black print head ..... 15, 49
- Bonus software ..... 41
- Bypass tray ..... 22

## C

- Card ..... 20, 49
- Carriage ..... 14
- Colour ink tank ..... 16, 49
- Colour print head ..... 15, 49
- Connecting
  - Parallel interface cable ..... 11
  - Power cord ..... 12
  - USB interface cable ..... 11

## E

- Envelope ..... 19, 22, 49

## F

- Front cover ..... 14
- Front side ..... 7

## G

- Guide ..... 18

## H

- Hardware requirements ..... 23, 42

## I

- IEEE1284 ..... 11, 49
- Indicator lights ..... 13
- Ink lamp ..... 13, 14
- Ink tank ..... 16, 49
- Installing
  - Acrobat Reader ..... 41, 47
  - Ink tank ..... 16
  - Print head ..... 14
  - Printer driver ..... 23, 42
- Interface cable ..... 11, 49
- Internal part ..... 7

## J

- Jam cover ..... 8

## L

- Loading paper
  - Bypass tray ..... 22
  - Paper tray ..... 18

## M

- Main features ..... 3

## O

- Online Manual ..... 4, 40, 46
- Output tray ..... 10, 18

## P

- Paper button ..... 7
- Paper knob ..... 19, 20, 22
- Paper lamp ..... 13
- Paper tray ..... 10, 18
- Paper type ..... 49
- Parallel interface ..... 11
- Part names ..... 7
- Port ..... 26, 30, 35
- Power button ..... 7, 12
- Power cord ..... 12
- Power lamp ..... 13, 14
- Power socket ..... 12
- Print head ..... 14, 49
- Print head latch ..... 14, 15
- Printer driver
  - Macintosh ..... 42
  - Windows 2000 ..... 31
  - Windows 95 ..... 34
  - Windows 98 ..... 27, 34
  - Windows Me ..... 24, 34
  - Windows NT 4.0 ..... 34
- Printing
  - How to print ..... 41, 47

## R

- Rear side ..... 8

## S

- Software requirements ..... 23, 42
- Specifications of the printer ..... 48
- Supplies ..... 49

## T

- Thick paper ..... 19, 20, 22

## U

- Unpacking ..... 9
- USB interface ..... 11

# ***SOFTWARE LICENSE***

**PLEASE READ THIS LICENSE CAREFULLY BEFORE USING THE SOFTWARE. BY USING THE SOFTWARE, YOU ARE AGREEING TO BE BOUND BY THE TERMS OF THIS LICENSE.**

## **1. License.**

The application, demonstration, system and other software accompanying this License, whether on disk, in read only memory, or on any other media (the "Software") and related documentation are licensed to you by SHARP. You own the disk on which the Software is recorded but SHARP and/or SHARP'S Licensors retain title to the Software and related documentation. This License allows you to use the Software on one or more computers connected to a single printer and make one copy of the Software in machine-readable form for backup purposes only. You must reproduce on such copy the SHARP copyright notice, the copyright notice of SHARP'S Licensors and any other proprietary legends of SHARP and/or its Licensors that were on the original copy of the Software. You may also transfer all your license rights in the software, the backup copy of the Software, the related documentation and a copy of this License to another party, provided the other party reads and agrees to the terms and conditions of this License.

## **2. Restrictions.**

The Software contains copyrighted material, trade secrets and other proprietary material which is owned by SHARP and/or its Licensors and in order to protect them you may not decompile, reverse engineer, disassemble or otherwise reduce the Software to a human-perceivable form. You may not modify, network, rent, lease, loan, distribute or create derivative works based upon the Software in whole or in part. You may not electronically transmit the Software from one computer to another or over a network.

## **3. Termination.**

This license is effective until terminated. You may terminate this License at any time by destroying the Software and related documentation and all copies thereof. This License will terminate immediately without notice from SHARP and/or SHARP'S Licensors if you fail to comply with any provision of this License. Upon termination you must destroy the Software and related documentation and all copies thereof.

## **4. Export Law Assurances.**

You agree and certify that neither the Software nor any other technical data received from SHARP, nor the direct product thereof, will be exported outside the United States except as authorized and as permitted by the laws and regulations of the United States. If the Software has been rightfully obtained by you outside of the United States, you agree that you will not re-export the Software nor any other technical data received from SHARP, nor the direct product thereof, except as permitted by the laws and regulations of the United States and the laws and the regulation of the jurisdiction in which you obtained the Software.

## **5. Government End Users.**

If you are acquiring the Software on behalf of any unit or agency of the United States Government, the following provisions apply. The Government agrees:

- (i) if the Software is supplied to the Department of Defense (DoD), the Software is classified as "Commercial Computer Software" and the Government is acquiring only "restricted rights" in the Software and its documentation as that term is defined in Clause 252.227-7013 (c)(1) of the DFARS; and
- (ii) if the Software is supplied to any unit or agency of the United States Government other than DoD, the Government's rights in the Software and its documentation will be as defined in Clause 52.227-19 (c)(2) of the FAR or, in the case of NASA, in Clause 18-52.227-86 (d) of the NASA Supplement to the FAR.

## **6. Limited Warranty on Media.**

SHARP warrants the disks on which the Software is recorded to be free from defects in materials and workmanship under normal use for a period of ninety (90) days from the date of purchase as evidenced by a copy of the receipt. The entire liability of SHARP and/or its Licensors and your exclusive remedy will be replacement of the disk which fails to meet the limited warranty provided by this Clause 6. A disk will be replaced when it is returned to SHARP or a SHARP authorized representative with a copy of the receipt. SHARP will have no responsibility to replace a disk damaged by accident, abuse or misapplication.

ANY IMPLIED WARRANTIES ON THE DISKS, INCLUDING THE IMPLIED WARRANTIES OF MERCHANTABILITY AND FITNESS FOR A PARTICULAR PURPOSE, ARE LIMITED IN DURATION TO NINETY (90) DAYS FROM THE DATE OF DELIVERY. THIS WARRANTY GIVES YOU SPECIFIC LEGAL RIGHTS, AND YOU MAY ALSO HAVE OTHER RIGHTS WHICH VARY FROM JURISDICTION TO JURISDICTION.

## **7. Disclaimer of Warranty on Software.**

You expressly acknowledge and agree that use of the Software is at your sole risk. The software and related documentation are provided "AS IS" and without warranty of any kind and SHARP and SHARP'S Licensor(s) (for the purpose of provisions 7 and 8, SHARP and SHARP'S Licensor(s) shall be collectively referred to as "SHARP") EXPRESSLY DISCLAIM ALL WARRANTIES, EXPRESS OR IMPLIED, INCLUDING, BUT NOT LIMITED TO, THE IMPLIED WARRANTIES OF MERCHANTABILITY AND FITNESS FOR A PARTICULAR PURPOSE. SHARP DOES NOT WARRANT THAT THE FUNCTIONS CONTAINED IN THE SOFTWARE WILL MEET YOUR REQUIREMENTS, OR THAT THE OPERATION OF THE SOFTWARE WILL BE UNINTERRUPTED OR ERROR-FREE, OR THAT DEFECTS IN THE SOFTWARE WILL BE CORRECTED. FURTHERMORE, SHARP DOES NOT WARRANT OR MAKE ANY REPRESENTATIONS REGARDING THE USE OR THE RESULTS OF THE USE OF THE SOFTWARE OR RELATED DOCUMENTATION IN TERMS OF THEIR CORRECTNESS, ACCURACY, RELIABILITY, OR OTHERWISE. NO ORAL OR WRITTEN INFORMATION OR ADVICE GIVEN BY SHARP OR A SHARP AUTHORIZED REPRESENTATIVE SHALL CREATE A WARRANTY OR IN ANY WAY INCREASE THE SCOPE OF THIS WARRANTY. SHOULD THE SOFTWARE PROVE DEFECTIVE, YOU (AND NOT SHARP OR A SHARP AUTHORIZED REPRESENTATIVE) ASSUME THE ENTIRE COST OF ALL NECESSARY SERVICING, REPAIR OR CORRECTION, SOME JURISDICTIONS DO NOT ALLOW THE EXCLUSION OF IMPLIED WARRANTIES, SO THE ABOVE EXCLUSION MAY NOT APPLY TO YOU.

## **8. Limitation of Liability.**

UNDER NO CIRCUMSTANCES INCLUDING NEGLIGENCE, SHALL SHARP BE LIABLE FOR ANY INCIDENTAL, SPECIAL OR CONSEQUENTIAL DAMAGES THAT RESULT FROM THE USE OR INABILITY TO USE THE SOFTWARE OR RELATED DOCUMENTATION, EVEN IF SHARP OR A SHARP AUTHORIZED REPRESENTATIVE HAS BEEN ADVISED OF THE POSSIBILITY OF SUCH DAMAGES. SOME JURISDICTIONS DO NOT ALLOW THE LIMITATION OR EXCLUSION OF LIABILITY FOR INCIDENTAL OR CONSEQUENTIAL DAMAGES SO THE ABOVE LIMITATION OR EXCLUSION MAY NOT APPLY TO YOU. In no event shall SHARP'S total liability to you for all damages, losses, and causes of action (whether in contract, tort (including negligence) or otherwise) exceed the amount paid by you for the Software.

## **9. Controlling Law and Severability.**

For a portion of the Software related with Apple Macintosh and Microsoft Windows, this license shall be governed by and construed in accordance with the laws of the state of California and Washington, respectively. If for any reason a court of competent jurisdiction finds any provision of this License, or portion thereof, to be unenforceable, that provision of the License shall be enforced to the maximum extent permissible so as to effect the intent of the parties, and the remainder of this License shall continue in full force and effect.

## **10. Complete Agreement.**

This License constitutes the entire agreement between the parties with respect to the use of the Software and related documentation, and supersedes all prior or contemporaneous understandings or agreements, written or oral, regarding such subject matter. No amendment to or modification of this License will be binding unless in writing and signed by a duly authorized representative of SHARP.

**SHARP**<sup>®</sup>  
SHARP CORPORATION